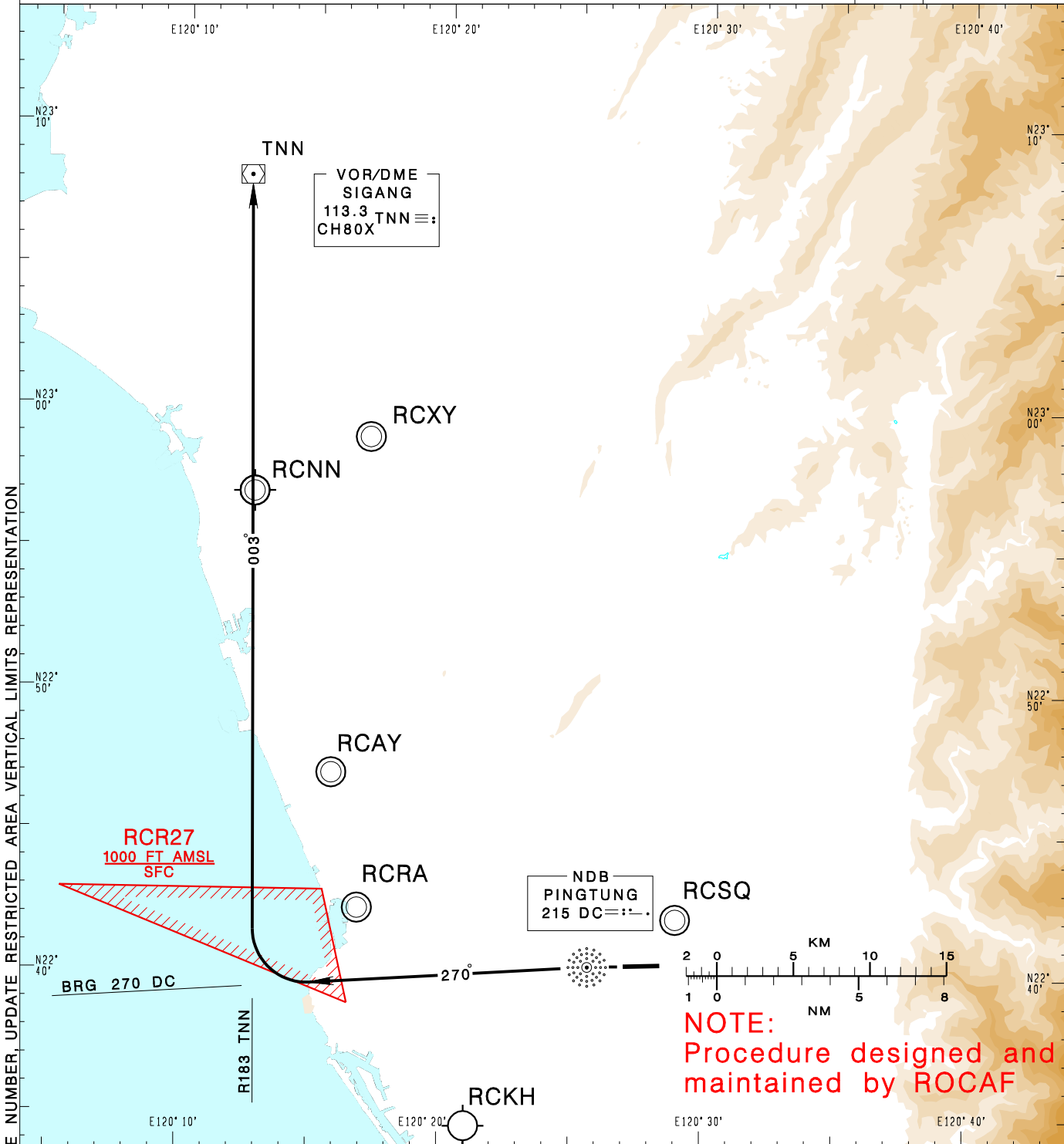


屏東南機場
PINGTUNG SOUTH AD

RCDC SID
PT2B (RWY27)

| | | | | |
|--|--|--------------------|--|--------------------|
| KAOHSIUNG APP 121.1 124.7 328.7 363.8 | PINGTUNG SOUTH TWR 126.18 236.6 315.4 | GND 275.8 | | |
| Apt Elev: 81' | | Trans Level: FL130 | | Trans Alt: 11,000' |
| BEARINGS ARE MAGNETIC; DISTANCES ARE NAUTICAL MILES; ELEVATIONS, HEIGHTS IN FEET | | | | |



CHANGES: NEW PAGE NUMBER, UPDATE RESTRICTED AREA VERTICAL LIMITS REPRESENTATION

PINGTUNG TWO BRAVO DEPARTURE
Maintain RWY HDG to DC. Track DC 270 BRG from DC.
Turn right intercept TNN R-183 inbound to TNN to join airway,
maintain ATC assigned altitude.

NOTE
CAUTION HIGH TERRAIN
BEGINNING AT 9NM EAST
OF THE AERODROME.